

3000 Plus Flexo Folder Gluer

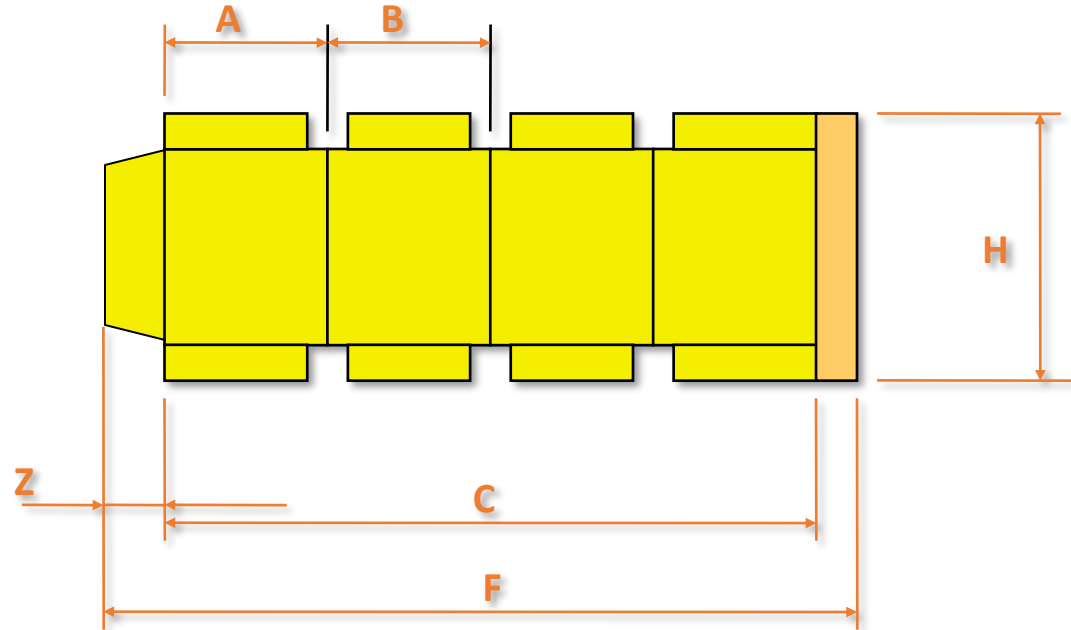


**Bottom
printing
Flexo
Folder
Gluer**

1.200 x 2.920

3000 Plus

FLEXP FOLDER GLUER SPECIFICATIONS WITH STITCHER



STANDARD VERSION

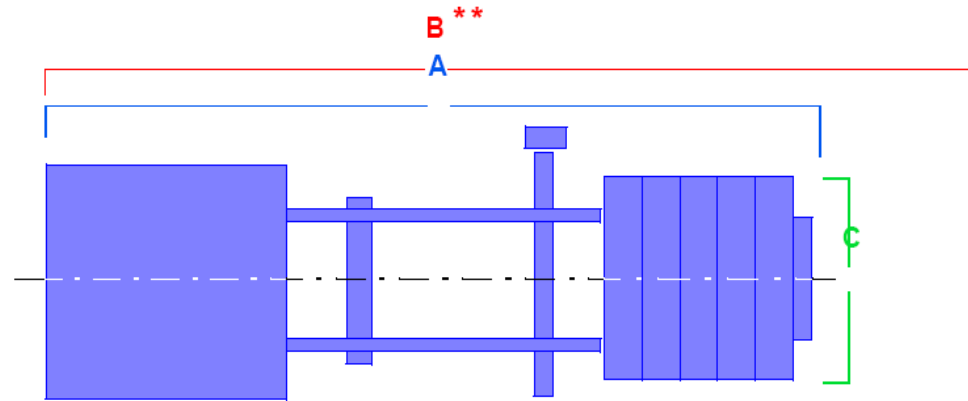
	A	B	C	F	H	S.F.	Z
MIN	100	200	600	==	350	==	==
MAX	1200 (230)	230 (1200)	2860	2920	1200	1700	60

SPECIAL VERSION

	A	B	C	F	H	S.F.	Z
MIN	100	125	600	==	350	==	==
MAX	1200 (200)	475 (1475)	2860	2920	1200	1700	60

Min A+B with stitecher= 300 mm
 Max printing width: 2700
 Max die cutting width: 2730
 Max flat sheet through: 1700 mm

3000 Plus



Position	Dimension
A Maximum Closed **	89' 27 m
B Maximum Open	94' 28.5 m
C Width	23' 6.8 m
Overall (floor to top of wire trough)	13' 4 M
Height of Press Boardline	43" 1100 mm

Section	Weight
Feed	13,400 lbs. (6.100 kg)
Print	16,000 lbs. (7.300 kg)
Die-Cut	18,300 lbs. (8.300 kg)
Slotter/Scorer	35,000 lbs. (16.000 kg)
Folder/Gluer	44,000 lbs. (20.000 kg)
Counter/Ejector	8,800 lbs. (2.500 kg)

All dimensions and measurements are based on the subsequent machine configuration; Feed section, two (2) Print sections, inline Die-Cutter, Slotter, Folder-Gluer, and Counter Ejector. Overall machine dimensions will vary, depending on configuration.

Productivity, accuracy, tolerance, and similar statements are descriptive without guarantee. Dimensions pertain only to MarquipWardUnited Inc. original equipment. Additions of any third party equipment may effect the maximum and minimum dimensions stated herein.